

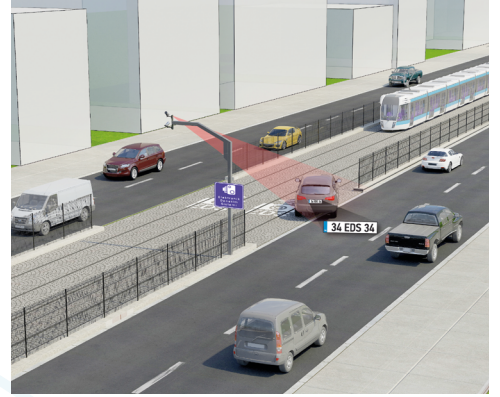
Tram Lane EDS

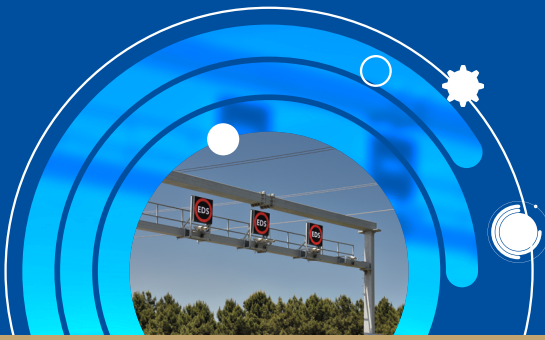
Electronic Detection Systems

It is a system that detects vehicles violating tram lane in order to ensure the safety and to reduce possible accidents. Tram Lane EDS monitors tram continuously; it automatically detects the vehicle entering the tram lane.

GENERAL FEATURES

- Automatic number-plate recognition system with 95% success rate
- For each violation, 2 high-quality and smart evidentiary photos and all the details of the violation (district, date and time, device serial number, intersection ID and name, software version, evidence number, number-plate, vehicle direction, etc.)
- 24/7 local video recording with high resolution camera
- Private security signature on violation photos
- KGYS compliance in the evidences transmitted from the field to the center
- Ability to create operation plans for more than one system with the grouping feature
- Modular software support
- Flexible system architecture





Tram Lane EDS

Electronic Detection Systems

TECHNICAL SPECIFICATIONS

Evidence pack	2 photos, video recording before and after the violation
Camera technology	GIGE or IP based
Material, body	Aluminum cabin and stainless steel construction pole
Number-plate recognition success	95%
Protection class	IP65
Temperature range (operation)	-25°C to +55°C
Operating principle	12VDC based
Vehicle detection	Innovative radar-based tracking technology or alternatively magnetic loop technology
Video recording	24/7 local video recording
Remote monitoring	✓
Industrial structure	✓
Operation calendar	✓
Modular software support	✓
Night color violation photo	✓
Automatic penalty report generation	✓
Instant plate detection	✓
Private security signature on violation photos	✓
24/7 detection in all light and weather conditions	✓
Innovative design	Ease of installation and transportation with its compact, modular and light body structure
Cameras	Violation Evidence / Video Camera: Clear violation photos and videos even in low light conditions with IP PTZ (Pan-Tilt-Zoom) high sensitivity cameras with 25 frames.
Compliances and product documents	<ul style="list-style-type: none"> - IP / Ingress Protection (IP55-IP65) - EMC / Electromagnetic Compatibility - LVD / Low Voltage Directive - Verification report by accredited organization